

Power Button / Status Light: Push down and hold to sync the MimioPad™ wireless pen tablet to the MimioHub™ wireless receiver. Repeat this process to add multiple MimioPad tablets to the same MimioHub receiver.

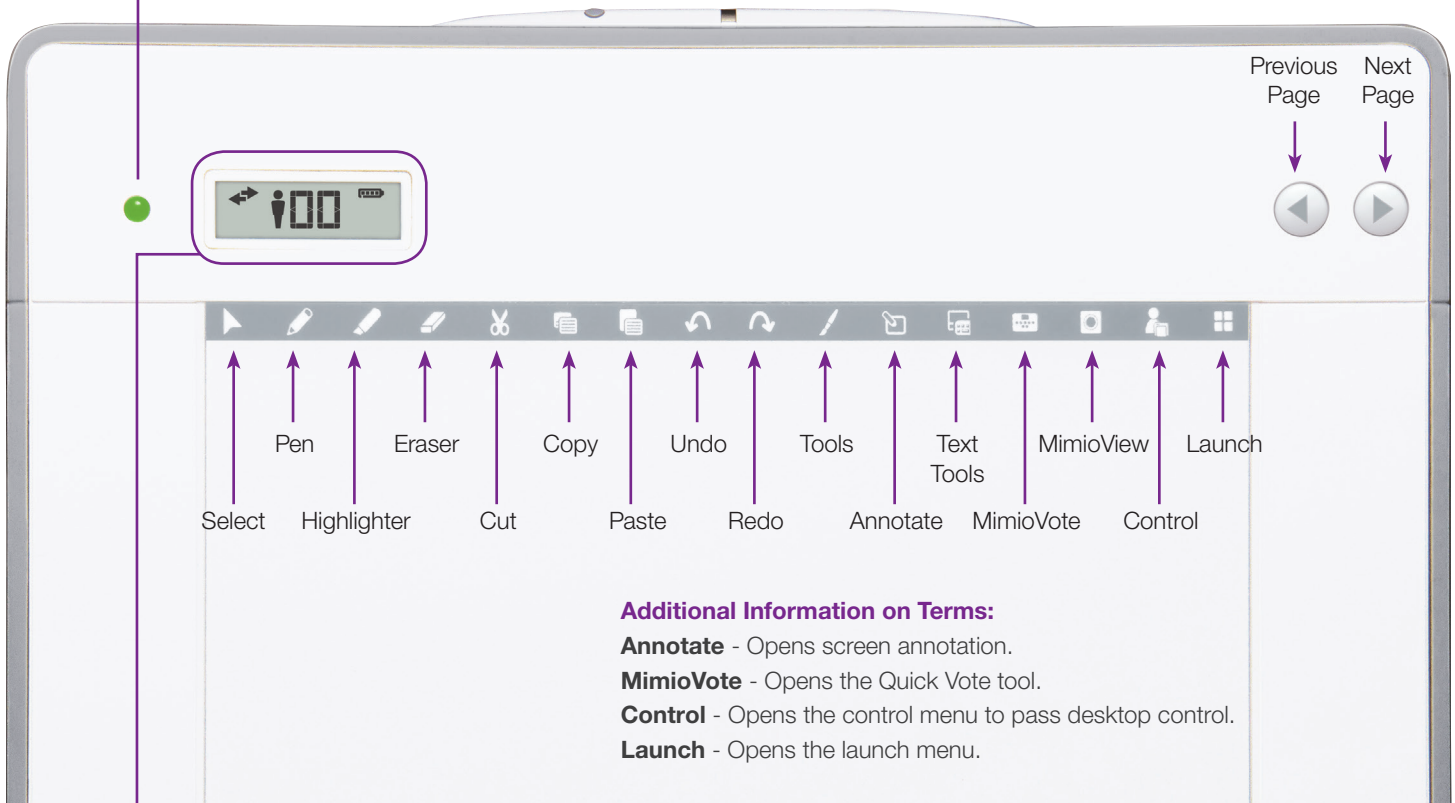
Status Light:

Off - MimioPad tablet is not receiving power or is off.

Solid Green - MimioPad tablet is connected and receiving power; MimioStudio™ software is running.

Flashing Green - MimioPad tablet is connected and receiving power; MimioStudio software is not running.

Solid Amber - MimioPad tablet is connected and receiving power; MimioPad tablet is searching for connection to the MimioHub receiver.



Select Pen Highlighter Eraser Cut Copy Paste Undo Redo Tools Annotate Text Tools MimioVote MimioView Control Launch

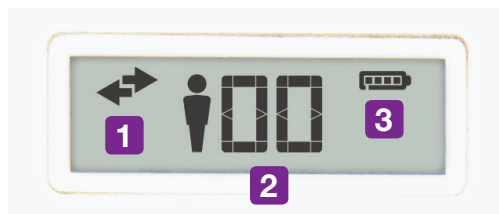
Additional Information on Terms:

Annotate - Opens screen annotation.

MimioVote - Opens the Quick Vote tool.

Control - Opens the control menu to pass desktop control.

Launch - Opens the launch menu.



LED Display:

1 Left arrow – MimioPad tablet is connected to the computer and ready to transfer data.

Right arrow – Stylus is in communication range of the MimioPad tablet.

2 Unit Number - In Student mode, the MimioPad tablets do not display the person icon.

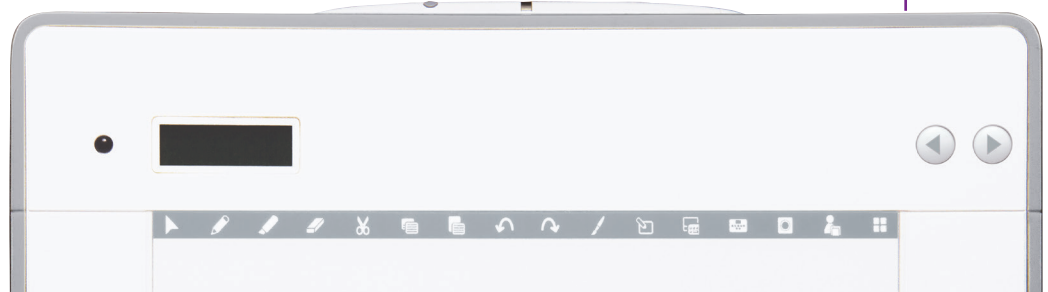
3 Battery Indicator

Hardware Components



Battery-less stylus attaches magnetically at top of the MimioPad tablet.

Stylus button creates right-click.



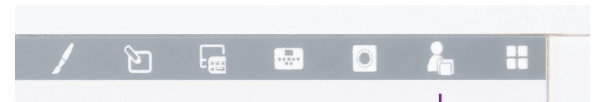
Micro-USB Connection -
Connect to computer to charge.

Control

Select any student using a mobile device* equipped with the MimioMobile™ app or a MimioPad tablet to give control to that student.

Take back control by clicking Control and choosing Teacher device.

Give control to another student by clicking Control and choosing that student's device.



Control



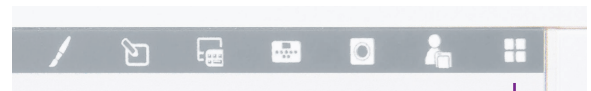
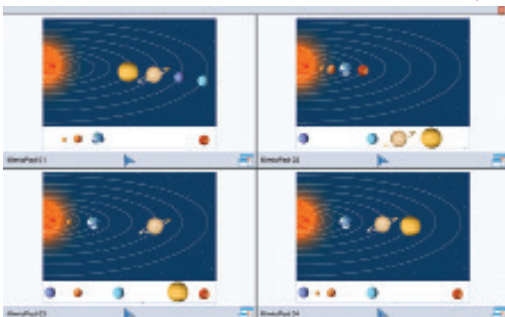
Collaborate

Up to nine mobile devices, MimioPad tablets, or a combination of both can be connected at once. All will be able to work independently on a Notebook activity, and all Collaborate sessions will be displayed at the front of the classroom. For on-the-fly collaboration opportunities, you can use the Quick Collaborate feature from the Launch menu to work on blank Notebook pages.

The Collaborate feature can be accessed within the MimioStudio software on the top toolbar.



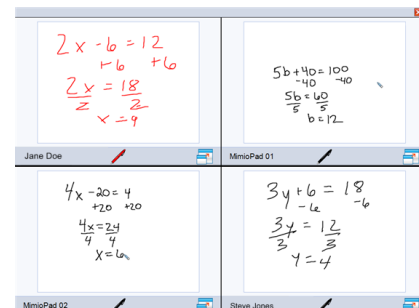
Collaborate



Launch



Quick Collaborate



Note: Use of MimioPad tablets and/or devices with the MimioMobile app requires MimioStudio 11 software. All mobile devices must be connected to the same Wi-Fi network as the teacher's computer.

* Supported Devices: iPad 2 and higher, iPad mini, iPod Touch (4th generation and higher), iPhone (4 and higher), and Android 3.0 (Honeycomb) or higher phone and tablets.